

# Sheridan Russell Gallery

## Body Matters

featuring

Dorothy Brook and Jane Waksman

with

Jean Noble RI SWA

and

Alain du Pontavice

1-8 November 2021

Gallery Different

14 Percy Street

London

W1T 1DR

# Dorothy Brook



Having trained at St Martin's School of Art and worked for many years as a Graphic Designer, I now work as a professional sculptor. My graphic training did not go to waste as, always fascinated by pattern and curves found everywhere around me, I aim to present the abstracted human figure in an aesthetically pleasing and harmonious way, paring it down to its essential lines and playing with the negative spaces as well as the form itself. Looking through half closed eyes I can almost see the form as a 2- dimensional line, and I work that line until the curve sings to me. Sometimes I will direct the form, others I will allow the form to lead me. But always checking that the pose is possible. Although it will be abstracted it still needs to be credible.

The inspiration for much of my work comes from dance, theatre, music and sport. The dynamics of a movement or the split second before a twist or turn, play an important part in the final result.

I exhibit around the U.K. and have pieces in private collections both here and around the world.

# Jane Waksman



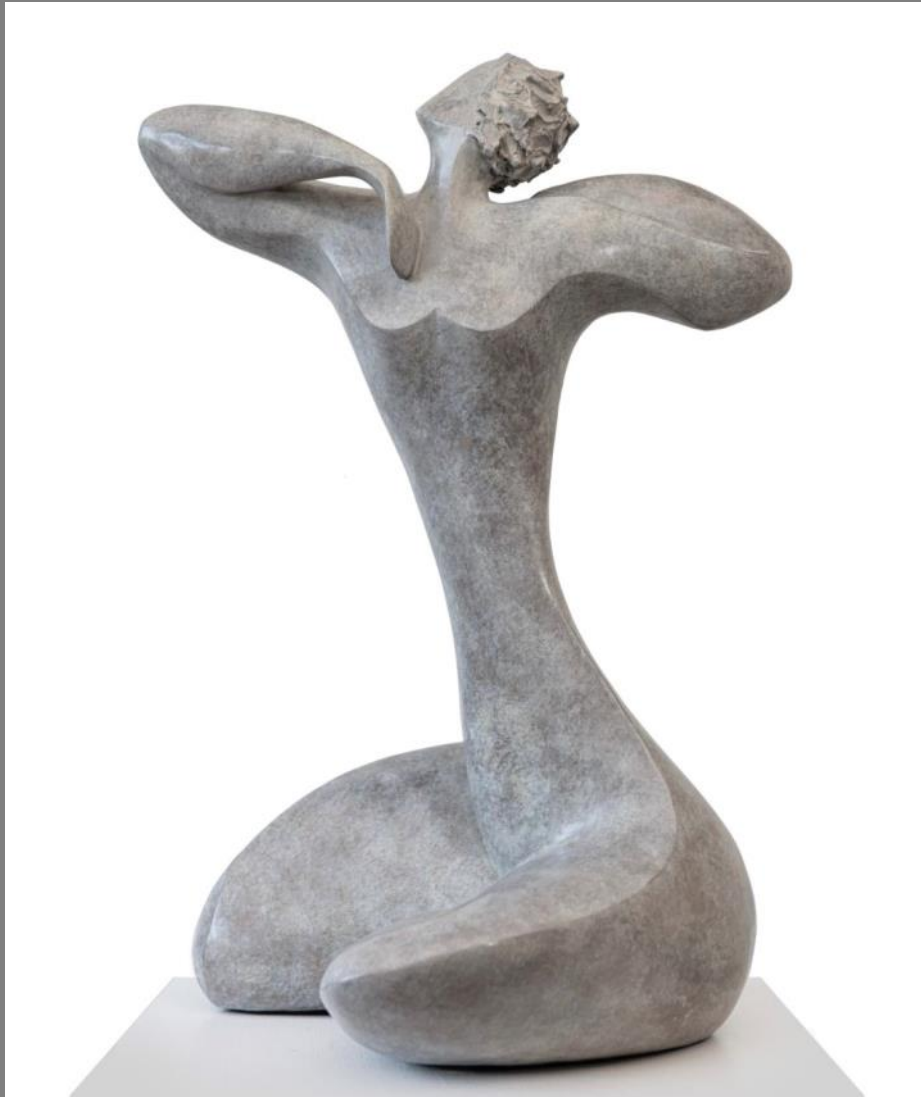
First drawn to sculpture in her mid-30s Jane was inspired by Hepworth, Chadwick and more generally by the stillness of Ancient Egyptian sculptures. After formal training at a variety of institutions including Central St Martins, Jane began her practice working in plaster and in stone. Her core interest is the human form, where she plays with the lines of the body, its shape, and surfaces.

A major part of Jane's sculpture career incorporates traditional stone carving This developed after studying in Carrera with master stone masons. In this medium she pays particular attention to the selection of beautiful and rare stones that she can form into human bodies and faces, taking guidance from nature's pre-existing lines and circles already buried within the rock. It's a combination of the stone itself, and the sculptor, that dictate the final form.

In her twenty years of sculpting Jane's works can be found in private collections across the UK, Middle East and United States. She is frequently exhibited at galleries in London and Manchester for solo and group shows. She , undertakes both public and private commissions and has a major outdoor piece at the Royal United Hospital in Bath.

Jane works from her studio in North London and at her studio in Italy where she sources the majority of her stone locally.

Dorothy Brook



Dawn - Bronze - Edition of 9 - 50x27x36cm



Raindance - Bronze - Edition of 9 - 72x38x12cm

Jane Waksman



Dianna—Calipso Marble - Unique - 55x16x5cm



Serendipity - Calipso Marble - Unique - 104x19x10cm

# Dorothy Brook



Maya - Bronze - Edition of 15 - 54x16x8cm



Seated Woman - Bronze - Edition of 25 - 35x16x13cm





Adastra - Bronze - edition of 9 - 57x16x34cm

Jane Waksman



Reflection - Bronze - Edition of 9 - 27x13x27cm



Dance—Bronze—Edition of 9 - 54x16x10cm

Jane Waksman



Brutus - Onyx - Unique - 51x47x14cm



Nefertiti - Portano Marble - Unique - 36x22x10cm

# Dorothy Brook



Diva - Bronze - Bronze - Edition of 15 - 47x25x13cm



Ready, Steady, Go - Bronze - Edition of 9 - 55x66x60cm

# Jane Waksman



Dancing Girl - Bronze - Artist Copy  
65x23x13cm



Jane Waksman



Day Dreams - Onyx - Unique - 43x18x6cm

Dorothy Brook



Defying Gravity - Bronze - Edition of 15 - 51x35x10cm

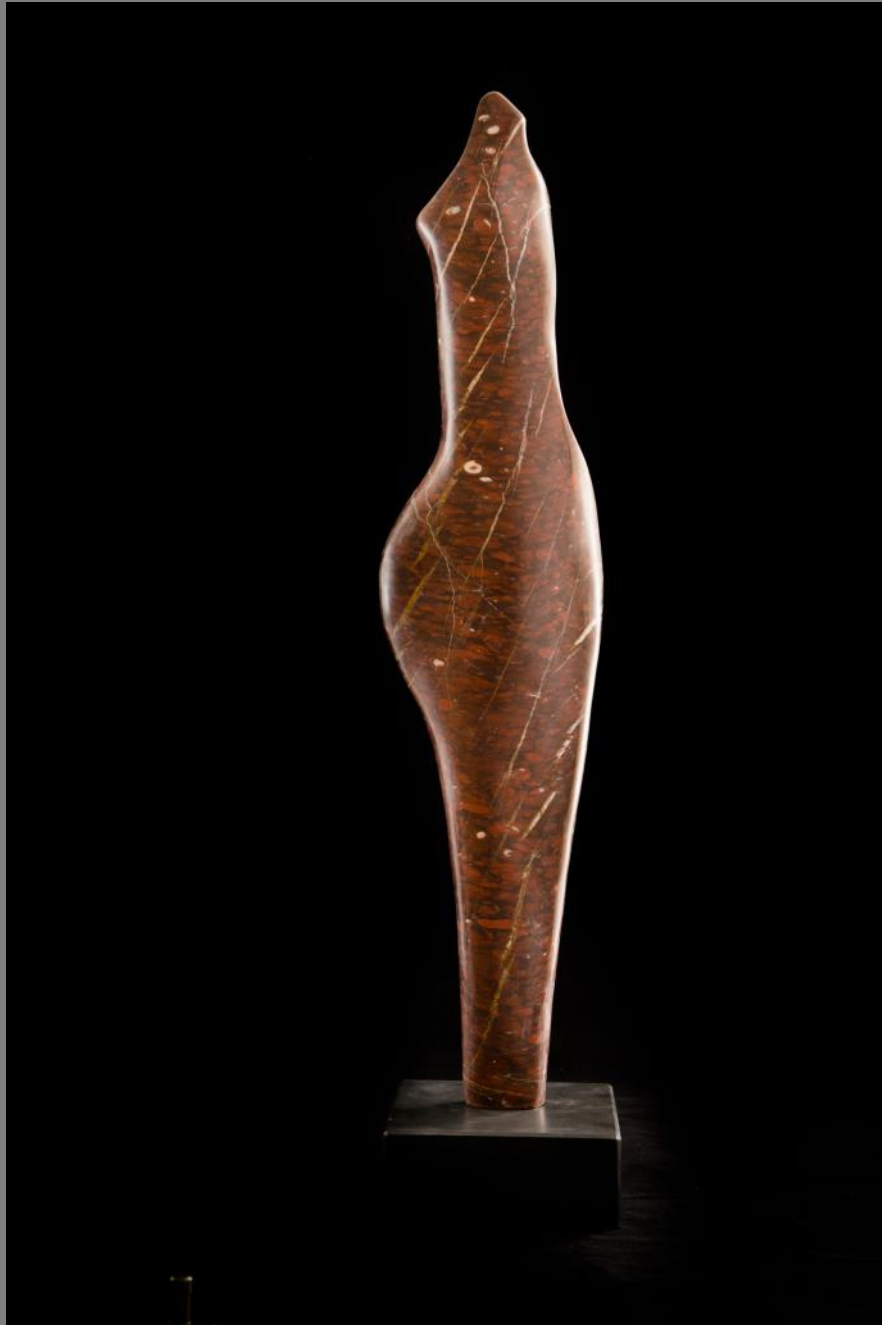


Sliding Tackle - Bronze - Edition of 9 - 48x56x30cm

Jane Waksman



White stripe- Onyx - Unique - 40x13x4cm



Princess - Kings Red Marble - Unique - 101x23x7cm

# Dorothy Brook



Catch Me Daddy - Bronze - Edition of 15  
40x13x18cm





After the Ball - Bronze Resin - Edition of 9 - 178x51x36cm

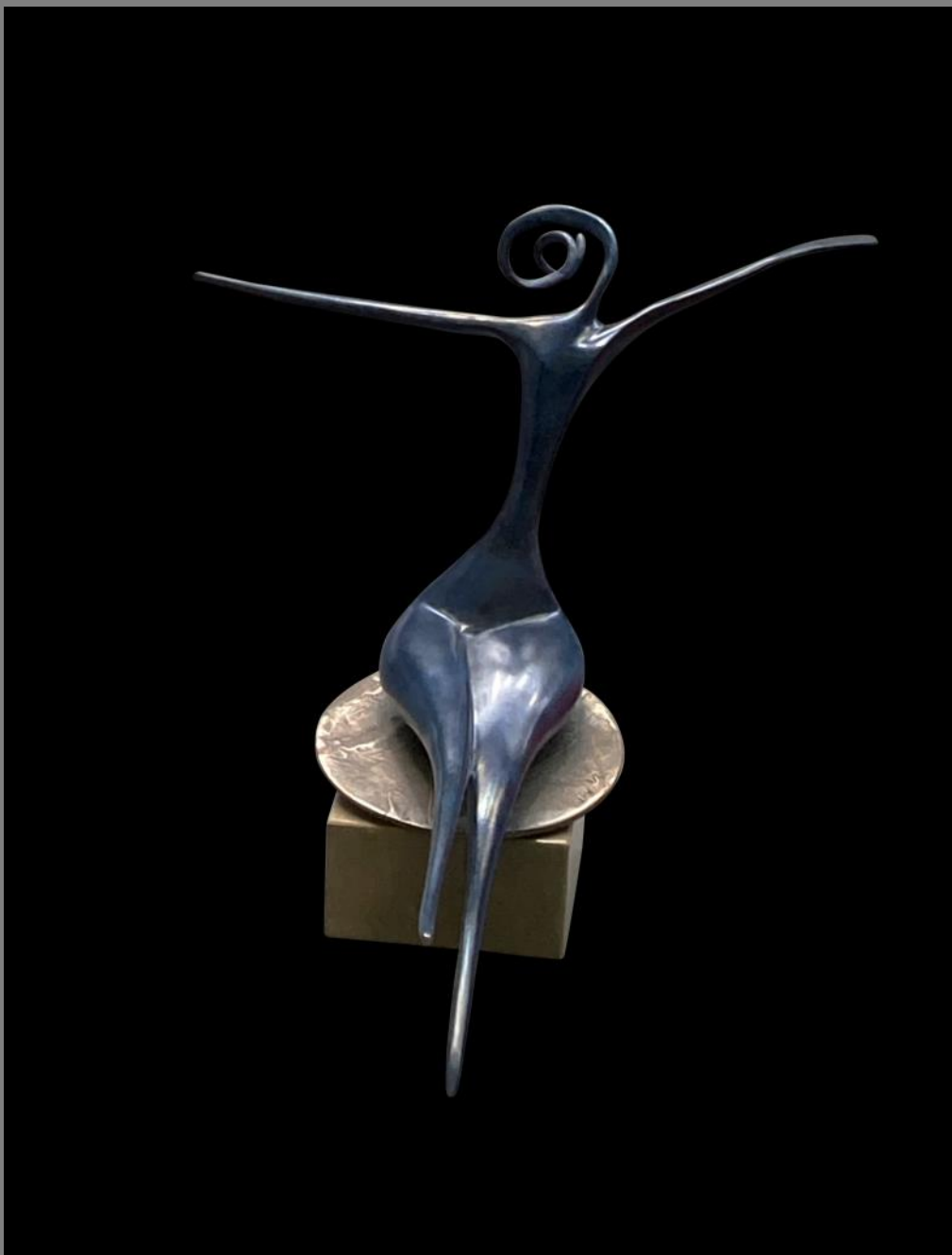
Jane Waksman



Duchess - Bronze - Edition of 9

56x12x8cm





Happy Days- Bronze - Edition of 9 - 25x29x32cm

# Dorothy Brook



Adam and Eve - Bronze - Edition of 9 - 52x25x18cm



Splash - Stainless Steel - Edition of 15 - 63x39x14cm

Jane Waksman



Makeda - Onyx - Unique - 52x28x10cm



Cleopatra - Unique - 49x17x9cm

# Dorothy Brook



Geisha - Bronze - Edition of 25 - 28x18x9cm



Candide - Bronze - Edition of 9 - 39x18x8cm

Jane Waksman



My Hero - Bronze - Edition of 9 - 41x17x5cm



Jane Waksman



Girl Talk - Bronze - Edition of 9 - 41x17x5cm

Jane Waksman



Diva - Bronze - Edition of 9 - 62x22x13cm



Joy - Bronze Resin -120cm high - Not in show

## Jean Noble RI SWA

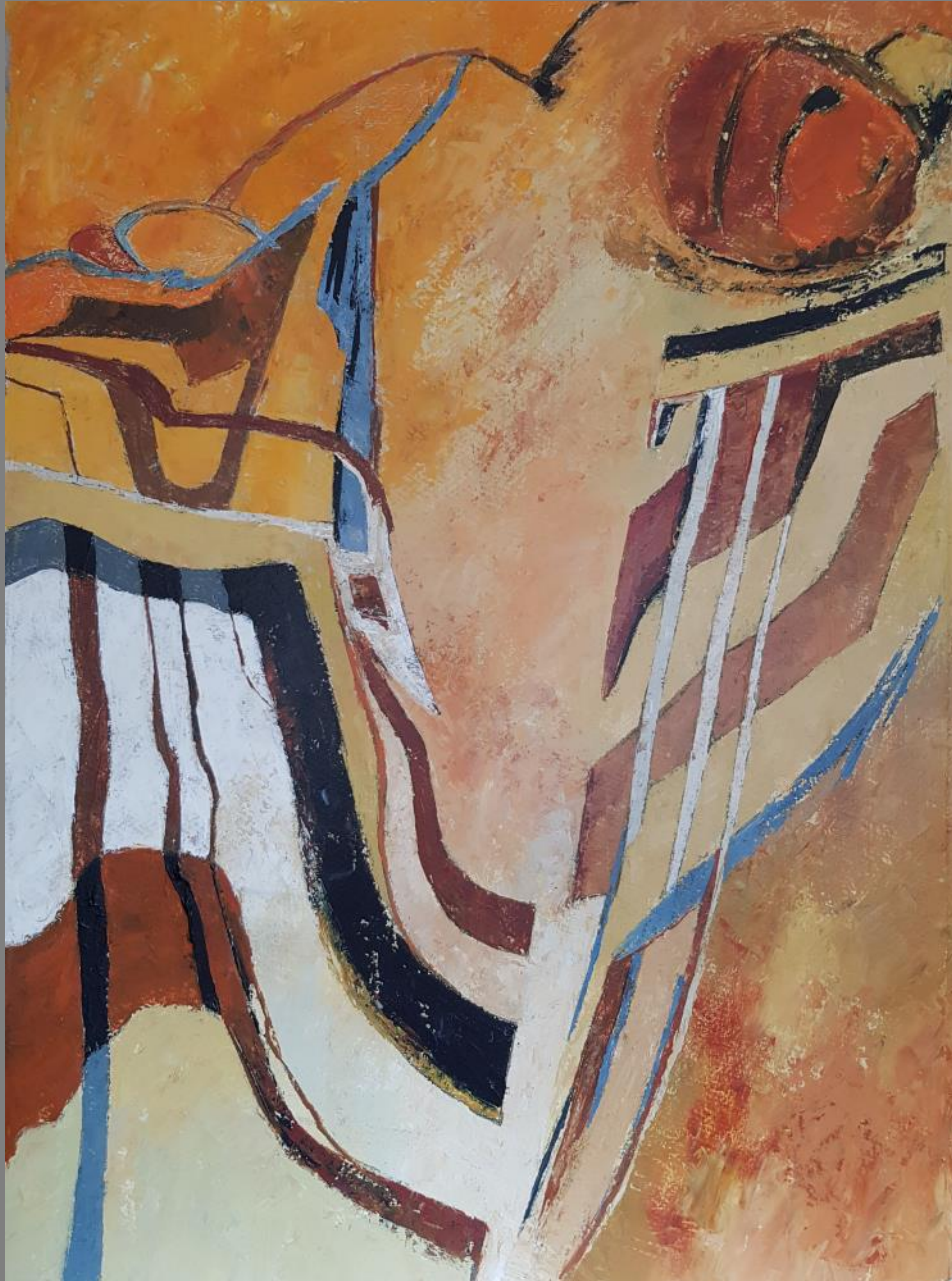


"All my work begins in front of the subject, whether in an urban landscape or the countryside. I allow my eyes to relax and my thoughts to absorb what is around me, so that from the initial sketch I make a response to my surroundings. Back in the studio I interpret my sketches into paintings that once started dictate changes and further responses to colour and shapes that I recollect from my original interpretation.

As an abstract painter it is very important to me to keep the 'idea' of the original reaction to a given space and time and allow the viewer room for their own interpretation as well.

Jean Noble is a member of the Royal Institute of Painters and the prestigious Society of Women Artists. She has been showing with Sheridan Russell Gallery for many years.





Driftwood - Acrylic on Mount Board - 104x85cm

Jean Noble RI SWA



Landlines- Acrylic on Mount Board - 69x49cm





Autumn Light - Acrylic on Mount Board - 79x108m

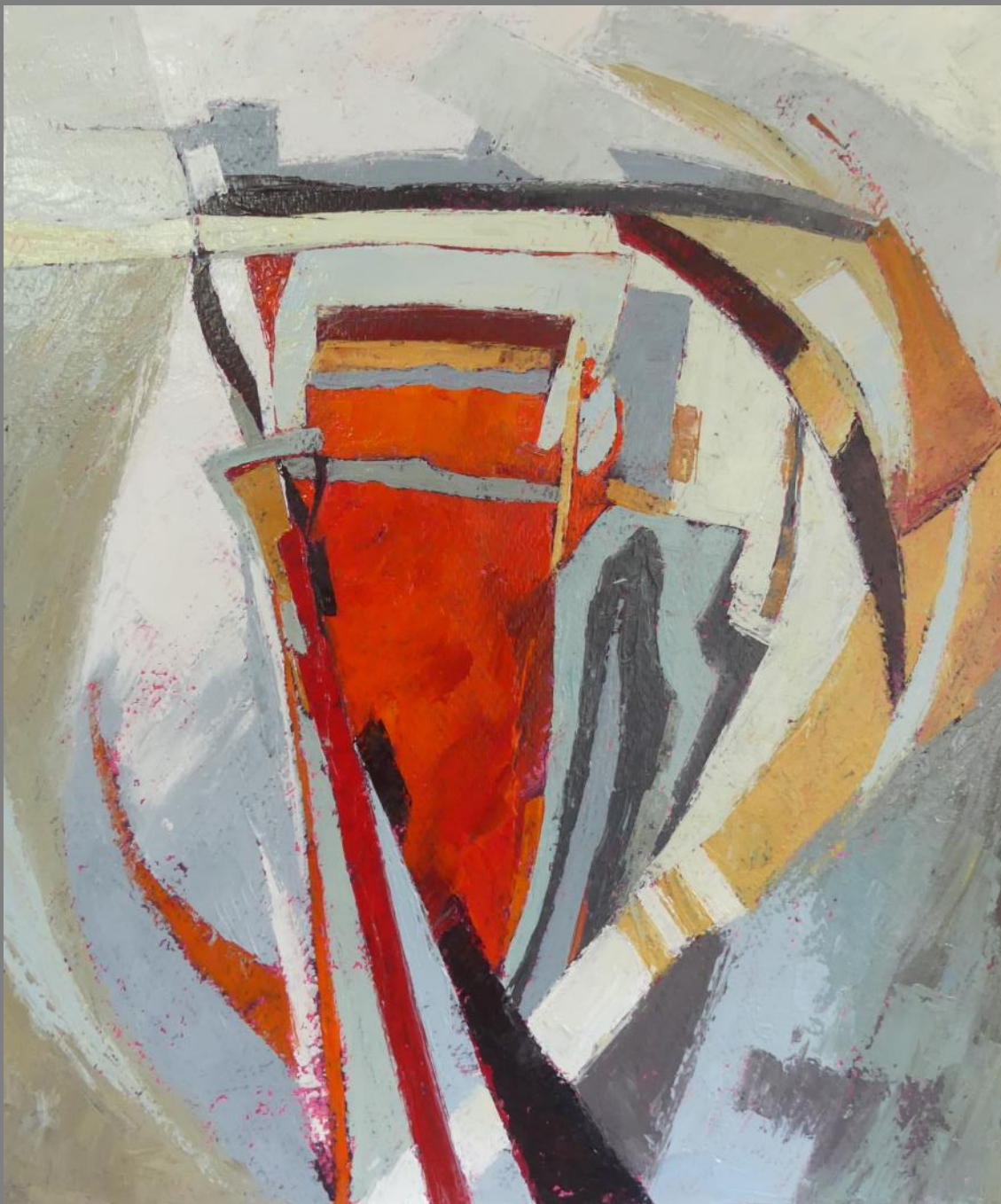
Jean Noble RI SWA



Strange Encounters - Acrylic on Mount Board

70x56cm





Edge of the Unknown - Acrylic on Mount Board - 73x65cm

Jean Noble RI SWA



First Fall - Acrylic on Mount Board - 60x51cm



Sailing Past the Finishing Line - Acrylic on Mount Board - 125x101cm



# Alain du Pontavice



Growing up in Paris in the 60's, Alain began drawing at the French Academy, 'La Grande Chaumière' and in the Montparnasse studios of artists.

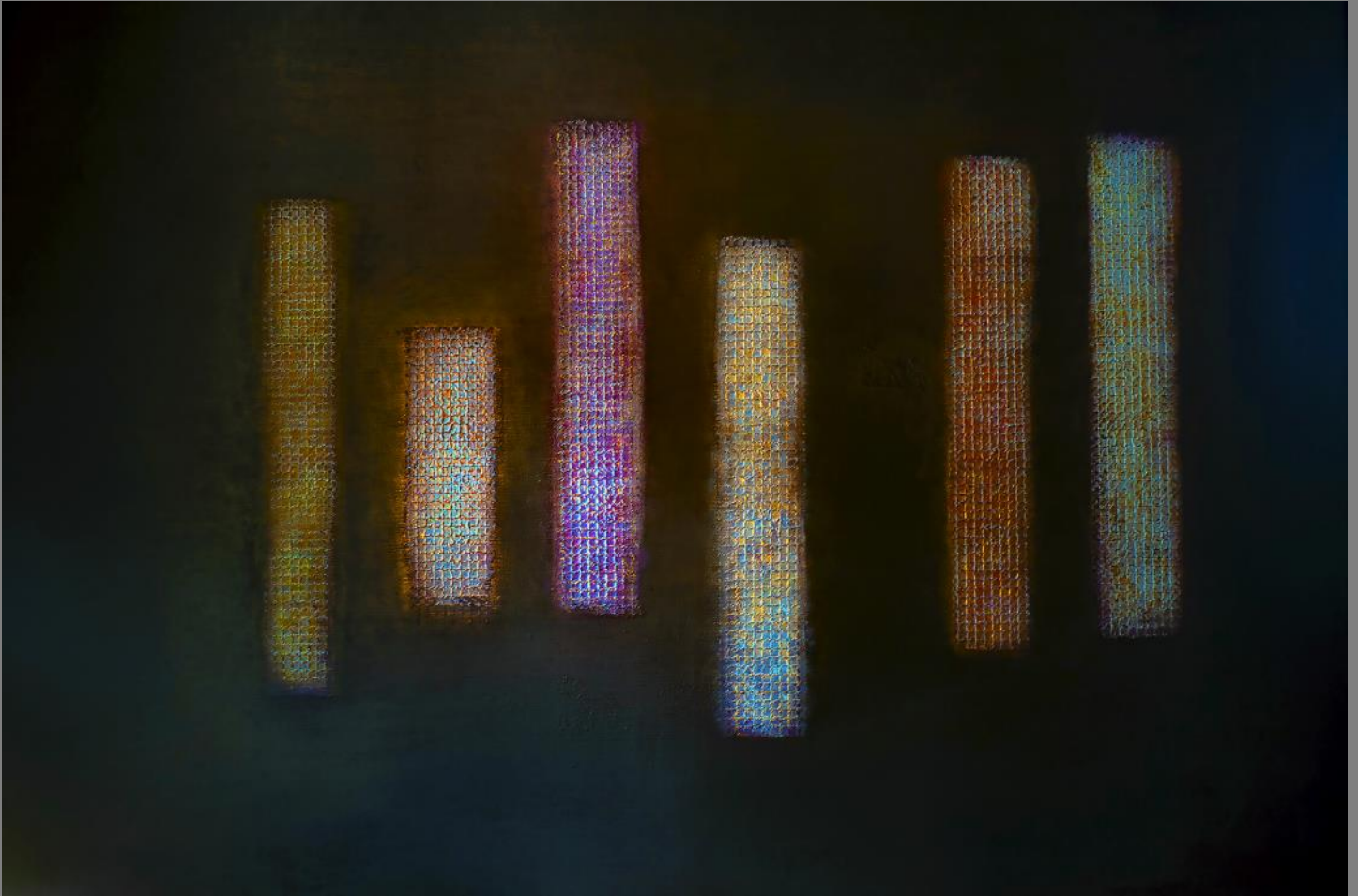
In 87 he graduated with an MA in Mandarin Chinese at the University of Paris 7 after which he lived fifteen years in Asia where he learned calligraphy and practised Taiji and meditation. He also worked at that time in textiles passionate of techniques such as Ikat, Batik and Shibori. In 2002 he established himself in South America where he was captivated by the energy of the Andes.

He started painting abstract art in 2004 revealing sceneries and landscapes with multi-layered backgrounds of oil paint whether in fine or thick coatings and using sometimes agglomerate of paints and sand. The process he uses has a deep connection with his inner-self exploring the unconscious and allowing the creativity to flow. A practice he nurtured early on with meditation and automatic drawing.



Thalassic Mumers- Oil on Canvas - 195x130cm

# Alain du Pontavice



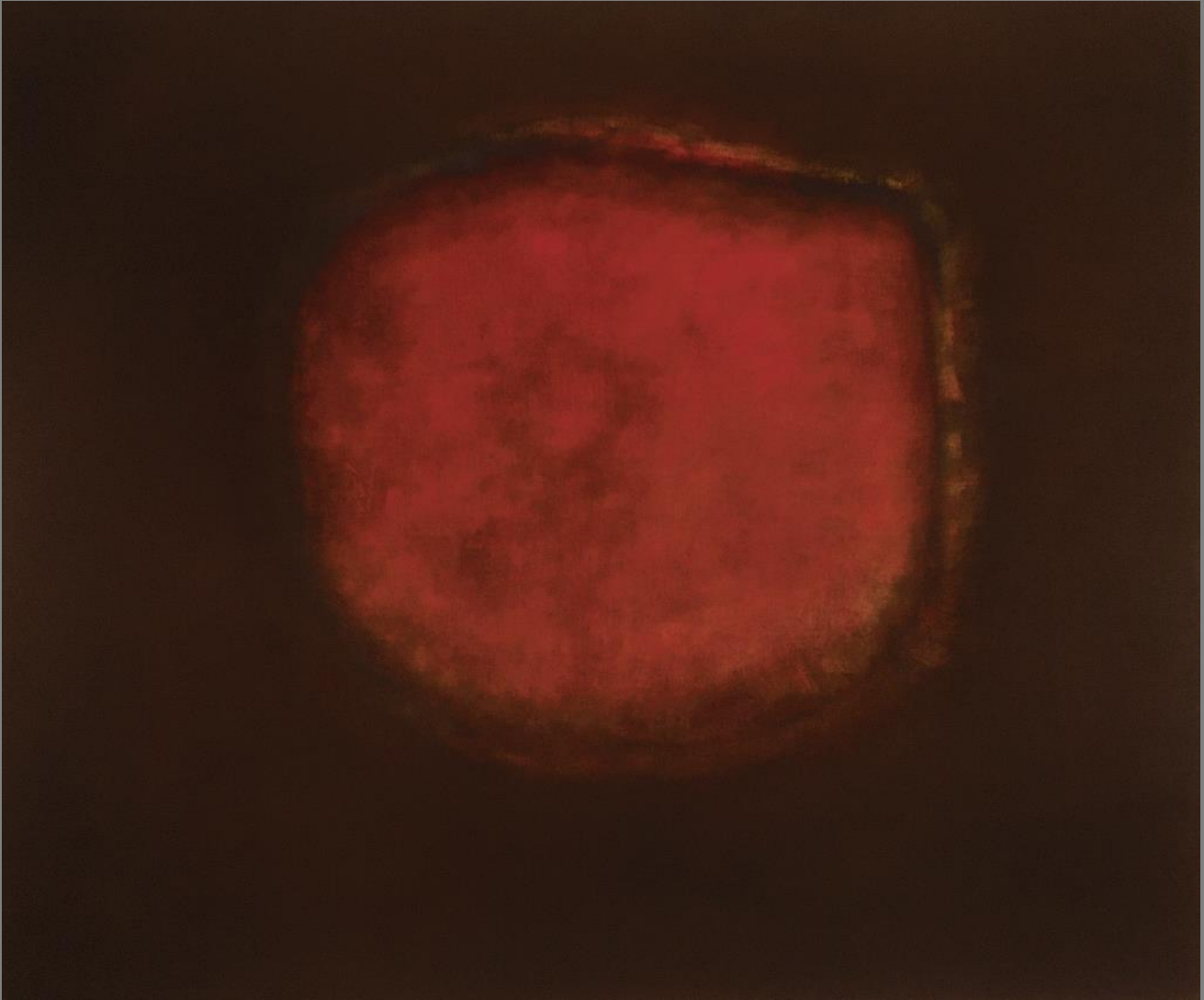
Steles III - Oil on Canvas - 114x146cm





Incandescent Murmurs - Oil on Canvas - 195x130cm

Alain du Pontavice



Hardoshir - Oil on Canvas - 117x137cm





Endlessness Within- Oil on Canvas - 195x130cm

# Alain du Pontavice



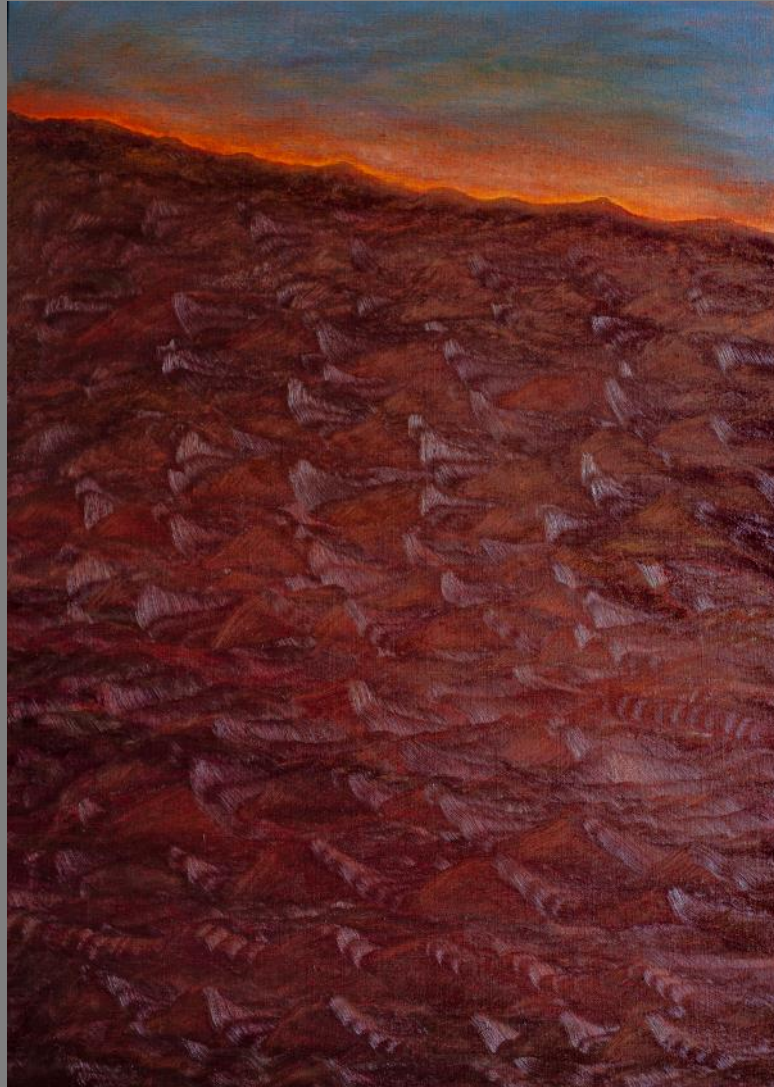
Lost Scriptures - Oil on Canvas - 117x137cm



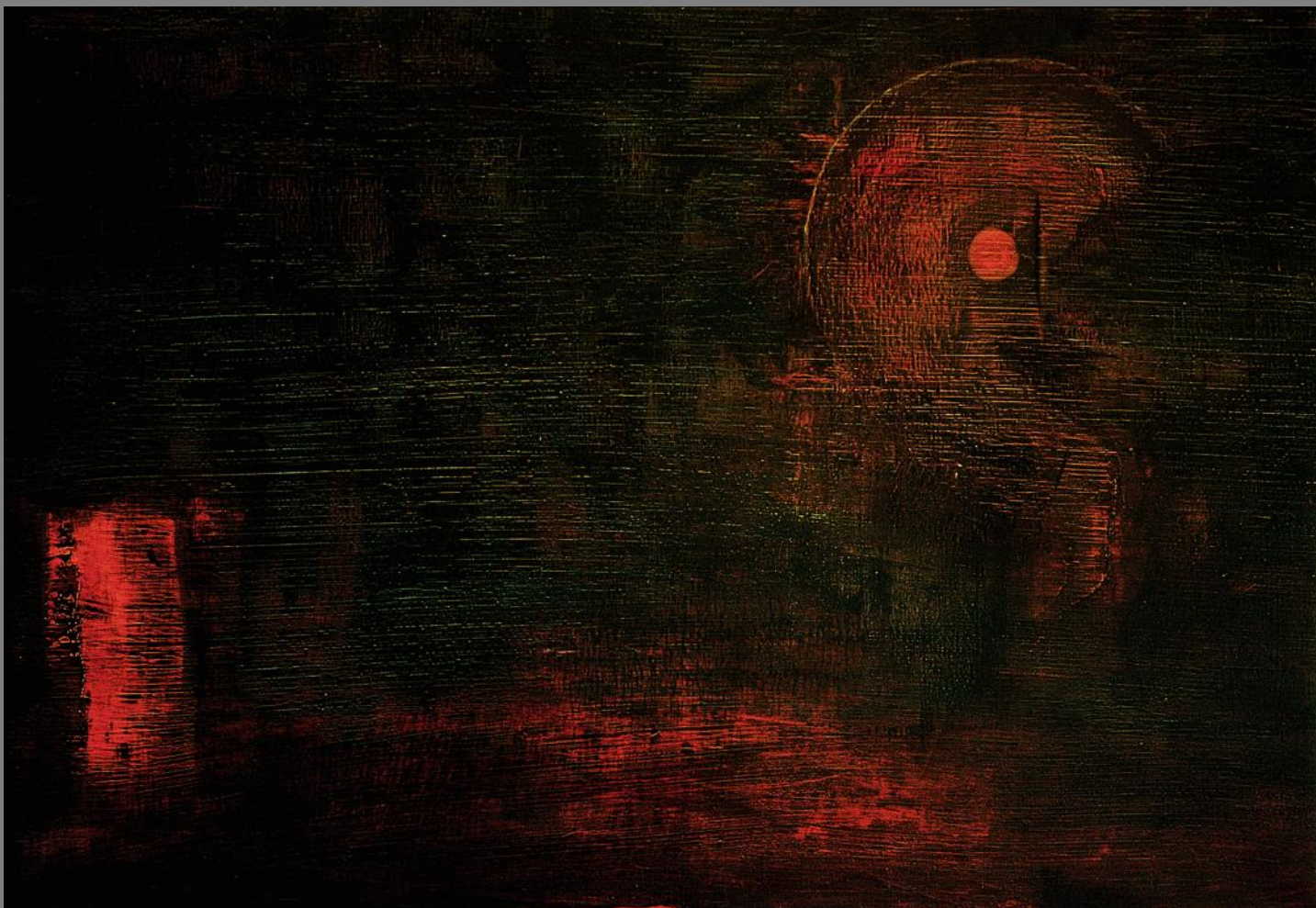
Monoliths I - Oil on Canvas - 80x100cm



# Alain du Pontavice



Red Dunes - Oil on Canvas - 92x65cm



The Passage - Oil on Canvas - 55x80cm



# Alain du Pontavice



Orange Sun - Oil on Canvas - 76x51cm



Murmurs in the Forest - Oil on Canvas - 195x130cm

# Alain du Pontavice



Nightfall at Sea - Oil on Canvas - 146x114cm





Hallowed II - Oil on Canvas - 50x73cm

# Alain du Pontavice



Red Sun Over Icy water - Oil on Canvas - 60x82cm



Furtive Sun - Oil on Canvas - 66x86cm



# Alain du Pontavice



Silver Veils over Peak - Oil on Canvas - 81x100cm